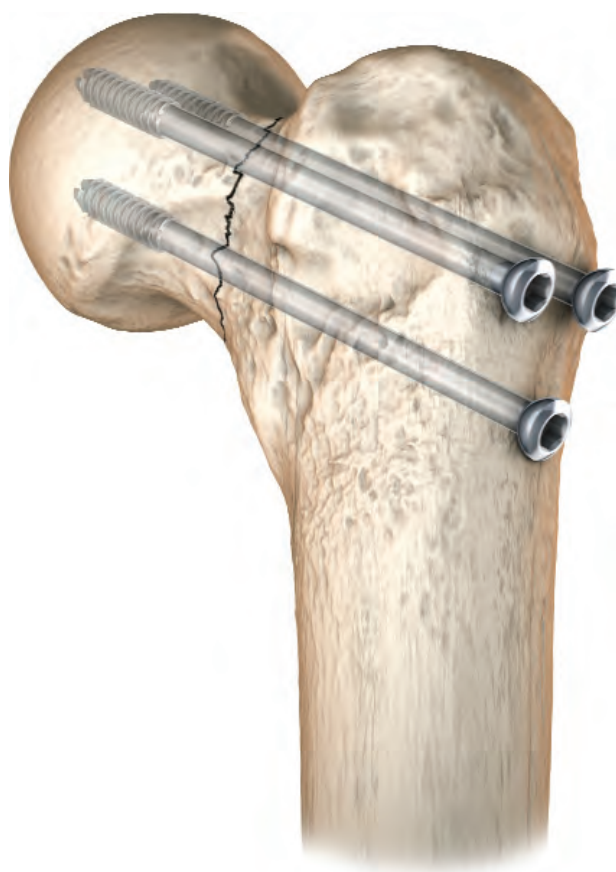


**LARGE
CANNULATED
SCREW SYSTEM**

6.5mm, 7.0mm & 8.0mm



LARGE CANNULATED SCREW SYSTEM

Surgical Technique

6.5mm, 7.0mm & 8.0mm Screws

Table of Contents

Introduction	2
Indications	2
Implant Features	3
Guide Pin Insertion	4
Percutaneous Guide Pin Sleeve.....	4
Rotating 3.2mm Guide Pin Sleeve	4
Adjustable Parallel Pin Guide.....	5
Multi Parallel Pin Guide	5
Countersinking	6
Screw Measurement	7
Drilling and Tapping	8
Screw Insertion	9
Washer Insertion	9
Closure	11
Screw Removal	11
Instrumentation	12
Standard	12
Optional	13
Catalog Information	14

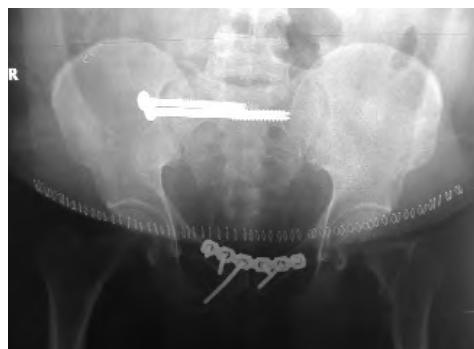
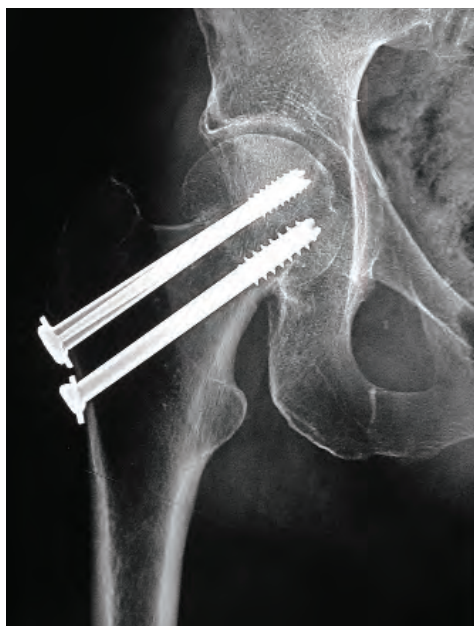
Nota Bene

The technique description herein is made available to the healthcare professional to illustrate the author's suggested treatment for the uncomplicated procedure. In the final analysis, the preferred treatment is that which addresses the needs of the specific patient.

Introduction

Indications

The LARGE CANNULATED SCREW SYSTEM is indicated for the fixation of small and long bone fractures in both adult and pediatric patients, including fractures of the femur, tibia, pelvis, acetabulum, the ulna, bones of the mid foot and the calcaneus.



Implant Features

- 316L stainless steel and Ti 6Al 4V alloy or titanium alloy implants*
- Partially threaded (16mm*, 22mm, 32mm* and 46mm) and fully threaded screws for optimal fit and interfragmentary compression
- Self-drilling and self-tapping for ease of insertion
- Reverse-cutting flutes to facilitate implant removal
- Cobalt chrome 3.2mm diameter guide pins for enhanced stiffness and reduced skiving in hard bone
- Round and butterfly configuration washers for increased intraoperative versatility
- Implants available sterile with screw rack option for non-sterile set-up
- Low-profile screw head for reduced soft tissue irritation
- Shared 4.7mm hex drive for intraoperative simplicity



6.5mm Cannulated Screw



7.0mm Cannulated Screw



8.0mm Cannulated Screw



Round washer



Butterfly washer

* 7.0mm Cannulated Screws only

Surgical Technique

Guide Pin Insertion

Attach the 9.0mm Screw Guide Insert (7117-7147) to the Universal Drill Guide Handle (7117-7203) and insert the 3.2mm Guide Pin Insert (7117-7121) into the back of the assembly. Introduce the 3.2mm Trocar (7117-7122) into the back of the guide pin insert.



Percutaneous Insertion

Make a stab incision at the site of screw entry. Insert the percutaneous sleeve assembly through the incision down to bone. Remove the 3.2mm Trocar and attach a 3.2mm x 300mm Threaded Guide Pin (7117-7201) to power via the Mini Connector (7163-1186)*. Insert the guide pin through the guide pin insert to the desired position in the femoral neck and head. Monitor guide pin insertion under fluoroscopy. Insert the desired number of guide pins.



Note All surgical steps can be performed through the percutaneous sleeve assembly.

Parallel Guide Pin Insertion: Optional

3.2mm Rotating Guide Pin Sleeve

Attach the 9.0mm Screw Guide Insert (7117-7147) to the Universal Drill Guide Handle (7117-7203) and insert the 3.2mm Rotating Guide Pin Sleeve (7117-7156) into the back of the assembly*. Make an incision at the site of screw entry. Insert the percutaneous assembly through the incision down to bone such that the brad point on the end of the pin guide penetrates the lateral cortex.

To adjust guide pin position, rotate the thumb wheel on the back of the 3.2mm Rotating Guide Pin Sleeve to the desired location and insert a 3.2mm guide pin. The guide pin sleeve's brad point will prevent loss of position while determining definitive guide pin location.



* The 3.2mm x 358mm Guide Pin (7117-7123) must be used for screws 130-180mm in length

Parallel Guide Pin Insertion: Optional

Adjustable Parallel Pin Guide

Attach the Adjustable Parallel Pin Guide (7117-7154) to the Universal Drill Guide Handle. Adjust pin spread to the desired distance by turning the thumb screw located on the top of the pin guide. Make an incision at the site of screw entry large enough to accommodate both barrels of the pin guide. Insert the assembly through the incision down to bone.

Attach a 3.2mm guide pin to power via the Mini Connector and insert through the selected barrel of the Adjustable Parallel Pin Guide to the desired position in the femoral neck and head. Insert the desired number of 3.2mm guide pins.



Parallel Guide Pin Insertion: Optional

Multi Parallel Pin Guide

Attach the Multi Parallel Pin Guide (7117-7152) to the Universal Drill Guide Handle. Make an incision at the site of screw entry large enough to accommodate the pin guide and insert the assembly through the incision down to bone.

Determine which holes will be used on the Multi Parallel Pin Guide and attach a 3.2mm guide pin to power via the Mini Connector. Insert the guide pin through the selected hole on the pin guide to the desired position in the femoral neck and head. Insert the desired number of guide pins*.



Note Hole spacing on the Multi Parallel Pin Guide is designed to prevent screw interdigitation. Usage of non-adjacent guide pin holes will prevent Round Washer overlap.

* When inserting multiple guide pins, it is recommended to insert the inferior-most guide pin first in order to obtain optimal cannulated screw position

Countersinking: Optional

For a reduced implant profile, a countersink may be used. Attach the 6.5mm/8.0mm Cannulated Countersink (7117-7137) to the Teardrop Screwdriver Handle (7117-7131)*. Slide the assembly over the 3.2mm guide pin through the 9.0mm Screw Guide Insert and countersink as desired.

Note The screw guide insert acts as a soft tissue protector during countersinking.

* The T-Handle w/Large AO Quick Connect (7117-7204) may be used in place of the Teardrop Screwdriver Handle

Screw Measurement

There are three options for cannulated screw measurement*.

Option 1: Calibrated 3.2mm Guide Pin

With the percutaneous sleeve assembly in place, screw length measurement is taken from the 3.2mm guide pin calibration that is flush with the back of the 9.0mm Screw Guide Insert. Ensure that the screw guide insert is against the cortex for accurate screw length measurement.

Note The 3.2mm guide pins are calibrated to work with the percutaneous sleeve assembly, the Adjustable Parallel Pin Guide, and the Multi Parallel Pin Guide. A measuring gauge must be used in all other instances.



Option 2: Large Cannulated Screw Measuring Gauge

Remove the 3.2mm Guide Pin Sleeve from the 9.0mm Screw Guide Insert. Pass the Large Cannulated Screw Measuring Gauge (7117-7138) through the screw guide insert down to bone. Screw length measurement is taken from the end of the guide pin. Ensure that the measuring gauge is against the cortex for accurate screw length measurement.



Option 3: No Insertion Instrumentation

Slide the measuring gauge over the 3.2mm guide pin and down to bone. Ensure that the measuring gauge is flush with the cortex for accurate screw length measurement. Screw length measurement is taken from the end of the guide pin.

Note When measuring for screw length, take into account any possible interfragmentary compression that may occur as this will affect final screw position.



* The Large Cannulated Screw Measuring Gauge is calibrated to display screw length from the near cortex to the tip of the guide pin

Drilling and Tapping

The self-drilling/tapping design of the 6.5mm, 7.0mm and 8.0mm Cannulated Screws renders pre-drilling and tapping unnecessary in most instances. However, if encountering hard bone, it may be useful to drill and/or tap prior to screw insertion.

Drilling for the Screw

Remove the 3.2mm Guide Pin Sleeve if present. Attach the appropriate cannulated drill bit (7117-7134 or 7117-7135) to power using the Adaptor (7117-7205). Slide the drill bit over the 3.2mm guide pin and through the 9.0mm Screw Guide Insert. Drill to the desired depth noting the calibrations on the drill bit against the back of the drill guide handle.



Tapping for the Screw

Remove the 3.2mm Guide Pin Sleeve if present. Attach the appropriate cannulated screw tap (7117-7143, 7117-7230, 7117-7146) to the Teardrop Screwdriver Handle* and slide the assembly over the 3.2mm guide pin through the 9.0mm Screw Guide Insert down to bone. Tap to the desired depth noting the calibrations on the tap against the back of the drill guide handle.



Note Do not tap on power.

Note The cannulated drill bits and taps are calibrated to read directly from the back of the 9.0mm Screw Guide Insert for accurate insertion depth.

Cannulated Drill Bit and Tap Guide

6.5mm Cannulated Screw	7.0mm Cannulated Screw	8.0mm Cannulated Screw
5.0mm Cannulated Drill Bit Cat. No. 7117-7134	5.0mm Cannulated Drill Bit Cat. No. 7117-7134	5.5mm Cannulated Drill Bit Cat. No. 7117-7135
6.5mm Cannulated Tap Cat. No. 7117-7143	7.0mm Cannulated Tap Cat. No. 7117-7230	8.0mm Cannulated Tap Cat. No. 7117-7146

* The T-Handle w/Large AO Quick Connect may be used in place of the Teardrop Screwdriver Handle

Screw Insertion

Attach the Teardrop Screwdriver Handle* to the 4.7mm Hexdriver Shaft (7117-7158) and insert the appropriate length cannulated screw through the 9.0mm Screw Guide Insert over the 3.2mm guide pin.

Alternatively, attach the hexdriver shaft to power via the quick chuck adapter and insert the appropriate length cannulated screw through the screw guide insert over the guide pin until the black line on the hexdriver shaft nears the back of the Universal Drill Guide Handle. Remove the hexdriver from the adapter and attach the Teardrop Screwdriver Handle* to complete screw insertion by hand. Remove all 3.2mm guide pins following screw insertion.

Note Screws may be inserted on power, but should always be tightened by hand in order to avoid loss of reduction, stripping of the screw head or damage to the screwdriver.



Washer Insertion

If desired, washers may be inserted along with the screws.

Round Washer

Slide the washer over the cannulated screw such that its recess rests against the underside of the screw head. Screw insertion follows the previously described technique.

Cannulated screws and round washers may also be inserted percutaneously through the Washer Sleeve (7117-7206). Attach the 3.2mm Guide Pin Sleeve to the Universal Drill Guide Handle and insert into the Washer Sleeve until locked. Slide the assembly over the 3.2mm guide pin down to bone. Detach the drill guide handle and guide pin sleeve from the Washer Sleeve. Hold the Washer Sleeve in place and proceed with screw/washer insertion.



* The T-Handle w/Large AO Quick Connect may be used in place of the Teardrop Screwdriver Handle

Butterfly Washer

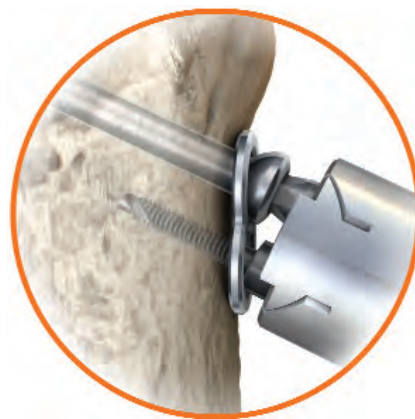
Attach the Butterfly Washer Guide (7117-7155) to the Universal Drill Guide Handle and press the assembly onto the butterfly washer to capture it. Slide the washer guide over the guide pin down to bone.



Attach the Step Provisional Fixation Pin (7117-7346) to power via the Quick Chuck Adapter and insert through the inferior hole in the washer guide into bone. Tighten the Provisional Fixation Pin by hand using the Teardrop Screwdriver Handle. Screw insertion follows the previously described technique.



As the cannulated screw is seated, the butterfly washer will release from the washer guide and compress against the bone. Remove the provisional fixation pin and proceed with insertion of a second cannulated screw through the inferior hole in the washer guide.



Closure

Obtain final radiographic images to confirm screw placement and fracture reduction. Wound closure follows standard technique.



Screw Removal Options

4.7mm Ball End Hexdriver Shaft (7117-7133)

Allows off-axis entry into the back of the screw for ease of removal.



6.5mm/8.0mm Screw Extractor (7117-7141)

Uses counterclockwise revolutions to facilitate screw removal.

Note Screws should be removed using a solid hexdriver to avoid damage to the screw head or cannulated hexdriver.



Standard Instrumentation



Quick Chuck Adapter
Cat. No. 7117-7205



Mini Connector
Cat. No. 7163-1186



Screw Capture Sleeve
Cat. No. 7117-7345



Universal Handle
Cat. No. 7117-7203



Teardrop Screwdriver Handle
Cat. No. 7117-7131



3.2mm Guide Pin Insert
Cat. No. 7117-7121



9.0mm Screw Guide Insert
Cat. No. 7117-7147



6.5mm/8.0mm Washer Sleeve
Cat. No. 7117-7206



6.5mm/8.0mm Cannulated Countersink
Cat. No. 7117-7137



4.7mm Ball End Hexdriver Shaft
Cat. No. 7117-7133



4.7mm Hexdriver Shaft
Cat. No. 7117-7158



Large Cannulated Screw Measuring Gauge
Cat. No. 7117-7138



3.2mm x 300mm Drill Bit w/Mini Connect
Cat. No. 7117-7202



3.2mm x 300mm Threaded Guide Pin
Cat. No. 7117-7201



3.2mm x 358mm Threaded Guide Pin*
Cat. No. 7117-7123



5.0mm Cannulated Drill Bit
Cat. No. 7117-7134



5.5mm Cannulated Drill Bit
Cat. No. 7117-7135



6.5mm/8.0mm Screw Extractor
Cat. No. 7117-7141



3.2mm Push Rod/Stylet
Cat. No. 7163-1122



3.2mm Trocar
Cat. No. 7117-7122

* The 3.2mm x 358mm Guide Pin must be used for screws 130-180mm in length

Optional Instrumentation



3.2mm Rotating Guide Pin Sleeve
Cat. No. 7117-7156



Adjustable Parallel Pin Guide
Cat. No. 7117-7154



Butterfly Washer Guide
Cat. No. 7117-7155



Multi Parallel Pin Guide
Cat. No. 7117-7152



T-Handle w/Large AO Quick Connect
Cat. No. 7117-7204



3.2mm Cleaning Brush
Cat. No. 7111-9114



6.5mm Cannulated Screw Tap
Cat. No. 7117-7143



7.0mm Cannulated Screw Tap
Cat. No. 7117-7230

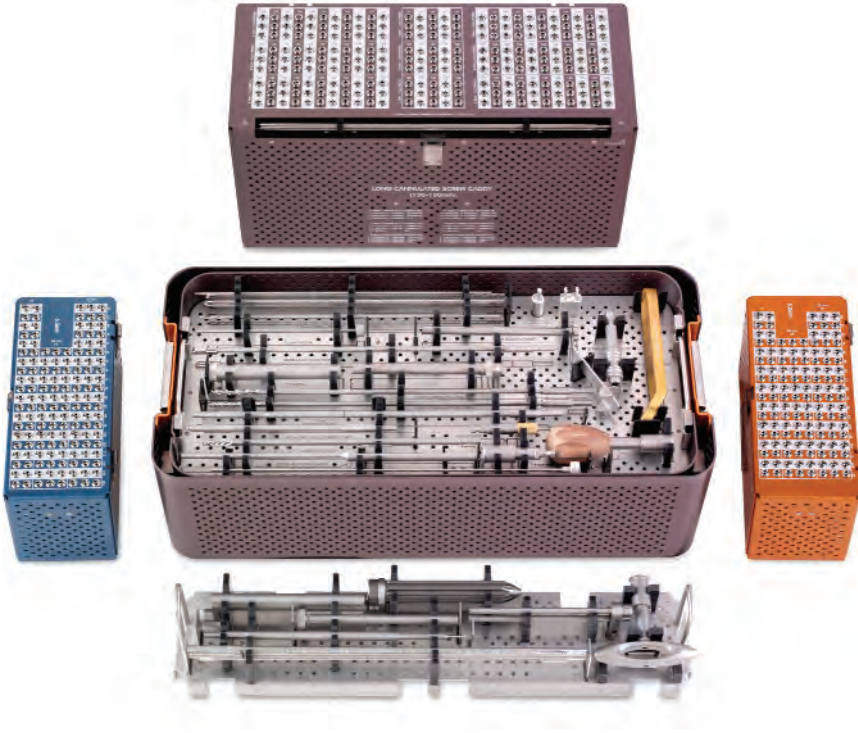


8.0mm Cannulated Screw Tap
Cat. No. 7117-7146



Step Provisional Fixation Pin
Cat. No. 7117-7346

Catalog Information



LARGE CANNULATED SCREW SYSTEM Complete Tray Set*

Set No. 7117-7300

Cat. No.	Description	Set Qty	Cat. No.	Description	Set Qty
7117-7310	Full Outer Tray	1 ea	7117-7319	6.5mm/8.0mm Long Screw Caddy	1 ea
7117-7312	Full Outer Tray Lid	1 ea	7117-7321	6.5mm/8.0mm Long Screw Caddy Lid	1 ea
7117-7314	Large Cannulated Screw Instrument Tray	1 ea	7117-7322	6.5mm Screw Caddy Lid	1 ea
7117-7316	6.5mm Screw Caddy	1 ea	7117-7323	7.0mm Screw Caddy Lid	1 ea
7117-7317	7.0mm Screw Caddy	1 ea	7117-7324	8.0mm Screw Caddy Lid	1 ea
7117-7318	8.0mm Screw Caddy	1 ea			

* Pictured with Optional Instrument Tray (7117-7159) and instruments

Complete Instrument Set

Set No. 7181-2501

Cat. No.	Description	Set Qty	Cat. No.	Description	Set Qty
7117-7201	3.2mm x 300mm Threaded Guide Pin	6 ea	7117-7137	6.5mm/8.0mm Cannulated Countersink w/Quick Connect	1 ea
7117-7202	3.2mm X 300mm Triple Flute Drill Bit with Mini Connect	3 ea	7117-7206	Washer Sleeve 12.7mm I.D.	1 ea
7117-7134	5.0mm Cannulated Drill Bit	1 ea	7163-1122	3.2mm Push Rod/Stylet	1 ea
7117-7135	5.5mm Cannulated Drill Bit	1 ea	7117-7141	6.5mm/8.0mm Screw Extractor	1 ea
7117-7138	Large Cannulated Screw Measuring Gauge	1 ea	7117-7345	Screw Capture Sleeve	1 ea
7117-7122	3.2mm Trocar	1 ea	7117-7310	Full Outer Tray	1 ea
7117-7121	3.2mm Guide Pin Sleeve	1 ea	7117-7312	Full Tray Lid	1 ea
7117-7147	9.0mm Screw Guide Insert	1 ea	7117-7314	Large Cannulated Screw Instrument Tray	1 ea
7117-7203	Universal Drill Guide Handle	1 ea	7117-7316	6.5mm Screw Caddy	1 ea
7117-7131	Teardrop Screwdriver Handle w/ Large AO Quick Connect	1 ea	7117-7317	7.0mm Screw Caddy	1 ea
7117-7158	4.7mm Hexdriver Shaft w/ Large AO Quick Connect	2 ea	7117-7318	8.0mm Screw Caddy	1 ea
7117-7133	4.7mm Ball End Hexdriver Shaft w/ Large AO Quick Connect	1 ea	7117-7319	6.5mm/8.0mm Long Screw Caddy	1 ea
7117-7205	Quick Chuck Adaptor (Hall/Jacobs Male to Large AO)	1 ea	7117-7322	6.5mm Screw Caddy Lid	1 ea
7163-1186	Mini Adaptor (Hall/Jacobs Male to Mini Connect)	1 ea	7117-7323	7.0mm Screw Caddy Lid	1 ea
			7117-7324	8.0mm Screw Caddy Lid	1 ea
			7117-7321	6.5mm/8.0mm Long Screw Caddy Lid	1 ea

Additionally Available

Instrument Case

Cat. No.	Description
7117-7159	Optional Instrument Tray

Instruments*

Cat. No.	Description	Set Qty
7117-7203	T-Handle w/Large AO Quick Connect	1 ea
7111-9114	3.2mm Cleaning Brush	1 ea
7117-7155	Butterfly Washer Guide	1 ea
7117-7152	Multi Parallel Pin Guide Attachment	1 ea
7117-7156	3.2mm Rotating Guide Pin Sleeve	1 ea
7117-7154	Adjustable Parallel Pin Guide	1 ea
7117-7346	Provisional Fixation Pin	1 ea
7117-7146	8.0mm Cannulated Screw Tap w/Quick Connect	1 ea
7117-7230	7.0mm Cannulated Screw Tap w/Quick Connect	1 ea
7117-7143	6.5mm Cannulated Screw Tap w/Quick Connect	1 ea

* Housed in the Optional Instrument Tray (7117-7159)

Catalog Information

Implants

6.5mm Cannulated Screw

Stainless Steel Implant Set

Set No. 7181-2502

Cat. No.	Screw Length	Thread Length	Set Qty	Cat. No.	Screw Length	Thread Length	Set Qty
7110-6530S	30mm	22mm	2 ea	7110-6805S	105mm	46mm	2 ea
7110-6535S	35mm	22mm	2 ea	7110-6810S	110mm	46mm	2 ea
7110-6540S	40mm	22mm	2 ea	7110-6815S	115mm	46mm	2 ea
7110-6545S	45mm	22mm	2 ea	7110-6820S	120mm	46mm	2 ea
7110-6550S	50mm	22mm	2 ea	7110-6825S	125mm	46mm	2 ea
7110-6555S	55mm	22mm	3 ea	7110-6230S	30mm	Full	2 ea
7110-6560S	60mm	22mm	3 ea	7110-6235S	35mm	Full	2 ea
7110-6565S	65mm	22mm	3 ea	7110-6240S	40mm	Full	2 ea
7110-6570S	70mm	22mm	3 ea	7110-6245S	45mm	Full	2 ea
7110-6575S	75mm	22mm	3 ea	7110-6250S	50mm	Full	2 ea
7110-6580S	80mm	22mm	3 ea	7110-6255S	55mm	Full	2 ea
7110-6585S	85mm	22mm	3 ea	7110-6260S	60mm	Full	2 ea
7110-6590S	90mm	22mm	3 ea	7110-6265S	65mm	Full	2 ea
7110-6595S	95mm	22mm	3 ea	7110-6270S	70mm	Full	2 ea
7110-6600S	100mm	22mm	3 ea	7110-6275S	75mm	Full	2 ea
7110-6605S	105mm	22mm	2 ea	7110-6280S	80mm	Full	2 ea
7110-6610S	110mm	22mm	2 ea	7110-6285S	85mm	Full	2 ea
7110-6615S	115mm	22mm	2 ea	7110-6290S	90mm	Full	2 ea
7110-6620S	120mm	22mm	2 ea	7110-6295S	95mm	Full	2 ea
7110-6625S	125mm	22mm	2 ea	7110-6300S	100mm	Full	2 ea
7110-6755S	55mm	46mm	3 ea	7110-6305S	105mm	Full	2 ea
7110-6760S	60mm	46mm	3 ea	7110-6310S	110mm	Full	2 ea
7110-6765S	65mm	46mm	3 ea	7110-6315S	115mm	Full	2 ea
7110-6770S	70mm	46mm	3 ea	7110-6320S	120mm	Full	2 ea
7110-6775S	75mm	46mm	3 ea	7110-6325S	125mm	Full	2 ea
7110-6780S	80mm	46mm	3 ea				
7110-6785S	85mm	46mm	3 ea				
7110-6790S	90mm	46mm	3 ea				
7110-6795S	95mm	46mm	3 ea				
7110-6800S	100mm	46mm	3 ea				

Cat. No.	Description	Set Qty
7110-1690S	12.7mm O.D. Round Washer	3 ea
7110-1693S	Butterfly Washer	3 ea

6.5mm Long Cannulated Screw Stainless Steel Implant Set

Set No. 7181-2506

Cat. No.	Screw Length	Thread Length	Set Qty	Cat. No.	Screw Length	Thread Length	Set Qty
7110-6630S	130mm	22mm	1 ea	7110-6870S	170mm	46mm	1 ea
7110-6635S	135mm	22mm	1 ea	7110-6875S	175mm	46mm	1 ea
7110-6640S	140mm	22mm	1 ea	7110-6880S	180mm	46mm	1 ea
7110-6645S	145mm	22mm	1 ea	7110-6330S	130mm	Full	1 ea
7110-6650S	150mm	22mm	1 ea	7110-6335S	135mm	Full	1 ea
7110-6655S	155mm	22mm	1 ea	7110-6340S	140mm	Full	1 ea
7110-6660S	160mm	22mm	1 ea	7110-6345S	145mm	Full	1 ea
7110-6665S	165mm	22mm	1 ea	7110-6350S	150mm	Full	1 ea
7110-6670S	170mm	22mm	1 ea	7110-6355S	155mm	Full	1 ea
7110-6675S	175mm	22mm	1 ea	7110-6360S	160mm	Full	1 ea
7110-6680S	180mm	22mm	1 ea	7110-6365S	165mm	Full	1 ea
7110-6830S	130mm	46mm	1 ea	7110-6370S	170mm	Full	1 ea
7110-6835S	135mm	46mm	1 ea	7110-6375S	175mm	Full	1 ea
7110-6840S	140mm	46mm	1 ea	7110-6380S	180mm	Full	1 ea
7110-6845S	145mm	46mm	1 ea				
7110-6850S	150mm	46mm	1 ea				
7110-6855S	155mm	46mm	1 ea				
7110-6860S	160mm	46mm	1 ea				
7110-6865S	165mm	46mm	1 ea				

Cat. No.	Description	Set Qty
7117-7123	3.2mm x 358mm Threaded Guide Pin	3 ea

Catalog Information

6.5mm Cannulated Screw

Titanium Implant Set

Set No. 7181-2606

Cat. No.	Screw Length	Thread Length	Set Qty	Cat. No.	Screw Length	Thread Length	Set Qty
7110-7230S	30mm	Full	2 ea	7110-7585S	85mm	22mm	3 ea
7110-7235S	35mm	Full	2 ea	7110-7590S	90mm	22mm	3 ea
7110-7240S	40mm	Full	2 ea	7110-7595S	95mm	22mm	3 ea
7110-7245S	45mm	Full	2 ea	7110-7600S	100mm	22mm	3 ea
7110-7250S	50mm	Full	2 ea	7110-7605S	105mm	22mm	2 ea
7110-7255S	55mm	Full	2 ea	7110-7610S	110mm	22mm	2 ea
7110-7260S	60mm	Full	2 ea	7110-7615S	115mm	22mm	2 ea
7110-7265S	65mm	Full	2 ea	7110-7620S	120mm	22mm	2 ea
7110-7270S	70mm	Full	2 ea	7110-7625S	125mm	22mm	2 ea
7110-7275S	75mm	Full	2 ea	7110-7755S	55mm	46mm	3 ea
7110-7280S	80mm	Full	2 ea	7110-7760S	60mm	46mm	3 ea
7110-7285S	85mm	Full	2 ea	7110-7765S	65mm	46mm	3 ea
7110-7290S	90mm	Full	2 ea	7110-7770S	70mm	46mm	3 ea
7110-7295S	95mm	Full	2 ea	7110-7775S	75mm	46mm	3 ea
7110-7300S	100mm	Full	2 ea	7110-7780S	80mm	46mm	3 ea
7110-7305S	105mm	Full	2 ea	7110-7785S	85mm	46mm	3 ea
7110-7310S	110mm	Full	2 ea	7110-7790S	90mm	46mm	3 ea
7110-7315S	115mm	Full	2 ea	7110-7795S	95mm	46mm	3 ea
7110-7320S	120mm	Full	2 ea	7110-7800S	100mm	46mm	3 ea
7110-7325S	125mm	Full	2 ea	7110-7805S	105mm	46mm	2 ea
7110-7530S	30mm	22mm	2 ea	7110-7810S	110mm	46mm	2 ea
7110-7535S	35mm	22mm	2 ea	7110-7815S	115mm	46mm	2 ea
7110-7540S	40mm	22mm	2 ea	7110-7820S	120mm	46mm	2 ea
7110-7545S	45mm	22mm	2 ea	7110-7825S	125mm	46mm	2 ea
7110-7550S	50mm	22mm	2 ea				
7110-7555S	55mm	22mm	3 ea				
7110-7560S	60mm	22mm	3 ea				
7110-7565S	65mm	22mm	3 ea				
7110-7570S	70mm	22mm	3 ea				
7110-7575S	75mm	22mm	3 ea				
7110-7580S	80mm	22mm	3 ea				

Cat. No.	Description	Set Qty
7110-3000S	12.7mm O.D. Round Washer	3 ea
7110-3003S	Butterfly washer	3 ea

6.5mm Long Cannulated Screw Titanium Implant Set

Set No. 7181-2606

Cat. No.	Screw Length	Thread Length	Set Qty
7110-7330S	130mm	Full	1 ea
7110-7335S	135mm	Full	1 ea
7110-7340S	140mm	Full	1 ea
7110-7345S	145mm	Full	1 ea
7110-7350S	150mm	Full	1 ea
7110-7355S	155mm	Full	1 ea
7110-7360S	160mm	Full	1 ea
7110-7365S	165mm	Full	1 ea
7110-7370S	170mm	Full	1 ea
7110-7375S	175mm	Full	1 ea
7110-7380S	180mm	Full	1 ea
7110-7630S	130mm	22mm	1 ea
7110-7635S	135mm	22mm	1 ea
7110-7640S	140mm	22mm	1 ea
7110-7645S	145mm	22mm	1 ea
7110-7650S	150mm	22mm	1 ea
7110-7655S	155mm	22mm	1 ea
7110-7660S	160mm	22mm	1 ea
7110-7665S	165mm	22mm	1 ea

Cat. No.	Screw Length	Thread Length	Set Qty
7110-7670S	170mm	22mm	1 ea
7110-7675S	175mm	22mm	1 ea
7110-7680S	180mm	22mm	1 ea
7110-7830S	130mm	46mm	1 ea
7110-7835S	135mm	46mm	1 ea
7110-7840S	140mm	46mm	1 ea
7110-7845S	145mm	46mm	1 ea
7110-7850S	150mm	46mm	1 ea
7110-7855S	155mm	46mm	1 ea
7110-7860S	160mm	46mm	1 ea
7110-7865S	165mm	46mm	1 ea
7110-7870S	170mm	46mm	1 ea
7110-7875S	175mm	46mm	1 ea
7110-7880S	180mm	46mm	1 ea

Cat. No.	Description	Set Qty
7117-7123	3.2mm x 358mm Threaded Guide Pin	3 ea

Catalog Information

7.0mm Cannulated Screw Stainless Steel Implant Set

Set No. 7112-0003

Cat. No.	Screw Length	Thread Length	Set Qty	Cat. No.	Screw Length	Thread Length	Set Qty
7112-7030	30mm	16mm	1 ea	7112-8100	100mm	32mm	2 ea
7112-7035	35mm	16mm	1 ea	7112-8105	105mm	32mm	2 ea
7112-7040	40mm	16mm	1 ea	7112-8110	110mm	32mm	1 ea
7112-7045	45mm	16mm	1 ea	7112-8115	115mm	32mm	1 ea
7112-7050	50mm	16mm	2 ea	7112-8120	120mm	32mm	1 ea
7112-7055	55mm	16mm	2 ea	7112-8125	125mm	32mm	1 ea
7112-7060	60mm	16mm	2 ea	7112-8130	130mm	32mm	1 ea
7112-7065	65mm	16mm	2 ea	7112-9030	30mm	Full	1 ea
7112-7070	70mm	16mm	2 ea	7112-9035	35mm	Full	1 ea
7112-7075	75mm	16mm	2 ea	7112-9040	40mm	Full	1 ea
7112-7080	80mm	16mm	4 ea	7112-9045	45mm	Full	1 ea
7112-7085	85mm	16mm	4 ea	7112-9050	50mm	Full	1 ea
7112-7090	90mm	16mm	4 ea	7112-9055	55mm	Full	1 ea
7112-7095	95mm	16mm	4 ea	7112-9060	60mm	Full	1 ea
7112-7100	100mm	16mm	4 ea	7112-9065	65mm	Full	1 ea
7112-7105	105mm	16mm	2 ea	7112-9070	70mm	Full	1 ea
7112-7110	110mm	16mm	2 ea	7112-9075	75mm	Full	1 ea
7112-7115	115mm	16mm	1 ea	7112-9080	80mm	Full	1 ea
7112-7120	120mm	16mm	1 ea	7112-9085	85mm	Full	1 ea
7112-7125	125mm	16mm	1 ea	7112-9090	90mm	Full	1 ea
7112-7130	130mm	16mm	1 ea	7112-9095	95mm	Full	1 ea
7112-8045	45mm	32mm	1 ea	7112-9100	100mm	Full	1 ea
7112-8050	50mm	32mm	1 ea	7112-9105	105mm	Full	1 ea
7112-8055	55mm	32mm	1 ea	7112-9110	110mm	Full	1 ea
7112-8060	60mm	32mm	1 ea	7112-9115	115mm	Full	1 ea
7112-8065	65mm	32mm	2 ea	7112-9120	120mm	Full	1 ea
7112-8070	70mm	32mm	2 ea	7112-9125	125mm	Full	1 ea
7112-8075	75mm	32mm	2 ea	7112-9130	130mm	Full	1 ea
7112-8080	80mm	32mm	2 ea				
7112-8085	85mm	32mm	2 ea				
7112-8090	90mm	32mm	2 ea				
7112-8095	95mm	32mm	2 ea				

Cat. No.	Description	Set Qty
12-1680	12.7mm O.D. Washer	6 ea

7.0mm Long Cannulated Screw Stainless Steel Implant Set

Set No. 7181-2507

Cat. No.	Screw Length	Thread Length	Set Qty	Cat. No.	Screw Length	Thread Length	Set Qty
7112-7130	130mm	16mm	1 ea	7112-8145	145mm	32mm	1 ea
7112-7135	135mm	16mm	1 ea	7112-8150	150mm	32mm	1 ea
7112-7140	140mm	16mm	1 ea	7112-9130	130mm	Full	1 ea
7112-7145	145mm	16mm	1 ea				
7112-7150	150mm	16mm	1 ea				
7112-8130	130mm	32mm	1 ea				
7112-8135	135mm	32mm	1 ea				
7112-8140	140mm	32mm	1 ea				

Cat. No.	Description	Set Qty
7117-7123	3.2mm x 358mm Threaded Guide Pin	3 ea

7.0mm Cannulated Screw

Titanium Implant Set

Set No. 7111-0008

Cat. No.	Screw Length	Thread Length	Set Qty	Cat. No.	Screw Length	Thread Length	Set Qty
7110-7030	30mm	16mm	1 ea	7110-7130	130mm	16mm	1 ea
7110-7035	35mm	16mm	1 ea	7110-8045	45mm	32mm	1 ea
7110-7040	40mm	16mm	1 ea	7110-8050	50mm	32mm	1 ea
7110-7045	45mm	16mm	1 ea	7110-8055	55mm	32mm	1 ea
7110-7050	50mm	16mm	2 ea	7110-8060	60mm	32mm	1 ea
7110-7055	55mm	16mm	2 ea	7110-8065	65mm	32mm	2 ea
7110-7060	60mm	16mm	2 ea	7110-8070	70mm	32mm	2 ea
7110-7065	65mm	16mm	2 ea	7110-8075	75mm	32mm	2 ea
7110-7070	70mm	16mm	2 ea	7110-8080	80mm	32mm	2 ea
7110-7075	75mm	16mm	2 ea	7110-8085	85mm	32mm	2 ea
7110-7080	80mm	16mm	4 ea	7110-8090	90mm	32mm	2 ea
7110-7085	85mm	16mm	4 ea	7110-8095	95mm	32mm	2 ea
7110-7090	90mm	16mm	4 ea	7110-8100	100mm	32mm	2 ea
7110-7095	95mm	16mm	4 ea	7110-8105	105mm	32mm	2 ea
7110-7100	100mm	16mm	4 ea	7110-8110	110mm	32mm	1 ea
7110-7105	105mm	16mm	2 ea	7110-8115	115mm	32mm	1 ea
7110-7110	110mm	16mm	2 ea	7110-8120	120mm	32mm	1 ea
7110-7115	115mm	16mm	1 ea	7110-8125	125mm	32mm	1 ea
7110-7120	120mm	16mm	1 ea	7110-8130	130mm	32mm	1 ea
7110-7125	125mm	16mm	1 ea				

7.0mm Long Cannulated Screw

Titanium Implant Set

Set No. 7181-2607

Cat. No.	Screw Length	Thread Length	Set Qty	Cat. No.	Screw Length	Thread Length	Set Qty
7110-7130	130mm	16mm	1 ea	7110-8145	145mm	32mm	1 ea
7110-7135	135mm	16mm	1 ea	7110-8150	150mm	32mm	1 ea
7110-7140	140mm	16mm	1 ea	7110-9130	130mm	Full	1 ea
7110-7145	145mm	16mm	1 ea				
7110-7150	150mm	16mm	1 ea				
7110-8130	130mm	32mm	1 ea	Cat. No.	Description		Set Qty
7110-8135	135mm	32mm	1 ea	7117-7123	3.2mm x 358mm Threaded Guide Pin		3 ea
7110-8140	140mm	32mm	1 ea				

Catalog Information

8.0mm Cannulated Screw Stainless Steel Implant Set

Set No. 7181-2504

Cat. No.	Screw Length	Thread Length	Set Qty	Cat. No.	Screw Length	Thread Length	Set Qty
7110--8540S	40mm	22mm	2 ea	7110-8805S	105mm	46mm	2 ea
7110-8545S	45mm	22mm	2 ea	7110-8810S	110mm	46mm	2 ea
7110-8550S	50mm	22mm	2 ea	7110-8815S	115mm	46mm	2 ea
7110-8555S	55mm	22mm	2 ea	7110-8820S	120mm	46mm	2 ea
7110-8560S	60mm	22mm	2 ea	7110-8825S	125mm	46mm	2 ea
7110-8565S	65mm	22mm	2 ea	7110-8240S	40mm	Full	1 ea
7110-8570S	70mm	22mm	2 ea	7110-8245S	45mm	Full	1 ea
7110-8575S	75mm	22mm	2 ea	7110-8250S	50mm	Full	1 ea
7110-8580S	80mm	22mm	2 ea	7110-8255S	55mm	Full	1 ea
7110-8585S	85mm	22mm	2 ea	7110-8260S	60mm	Full	1 ea
7110-8590S	90mm	22mm	2 ea	7110-8265S	65mm	Full	1 ea
7110-8595S	95mm	22mm	2 ea	7110-8270S	70mm	Full	1 ea
7110-8600S	100mm	22mm	2 ea	7110-8275S	75mm	Full	1 ea
7110-8605S	105mm	22mm	2 ea	7110-8280S	80mm	Full	1 ea
7110-8610S	110mm	22mm	2 ea	7110-8285S	85mm	Full	1 ea
7110-8615S	115mm	22mm	2 ea	7110-8290S	90mm	Full	1 ea
7110-8620S	120mm	22mm	2 ea	7110-8295S	95mm	Full	1 ea
7110-8625S	125mm	22mm	2 ea	7110-8300S	100mm	Full	1 ea
7110-8755S	55mm	46mm	2 ea	7110-8305S	105mm	Full	1 ea
7110-8760S	60mm	46mm	2 ea	7110-8310S	110mm	Full	1 ea
7110-8765S	65mm	46mm	2 ea	7110-8315S	115mm	Full	1 ea
7110-8770S	70mm	46mm	2 ea	7110-8320S	120mm	Full	1 ea
7110-8775S	75mm	46mm	2 ea	7110-8325S	125mm	Full	1 ea
7110-8780S	80mm	46mm	2 ea				
7110-8785S	85mm	46mm	2 ea				
7110-8790S	90mm	46mm	2 ea				
7110-8795S	95mm	46mm	2 ea				
7110-8800S	100mm	46mm	2 ea				
Cat. No.	Description	Set Qty					
7110-1690S	12.7mm O.D. Round Washer	3 ea					
7110-1693S	Butterfly Washer	3 ea					

8.0mm Long Cannulated Screw Stainless Steel Implant Set

Set No. 7181-2508

Cat. No.	Screw Length	Thread Length	Set Qty	Cat. No.	Screw Length	Thread Length	Set Qty
7110-8630S	130mm	22mm	1 ea	7110-8870S	170mm	46mm	1 ea
7110-8635S	135mm	22mm	1 ea	7110-8875S	175mm	46mm	1 ea
7110-8640S	140mm	22mm	1 ea	7110-8880S	180mm	46mm	1 ea
7110-8645S	145mm	22mm	1 ea	7110-8330S	130mm	Full	1 ea
7110-8650S	150mm	22mm	1 ea	7110-8335S	135mm	Full	1 ea
7110-8655S	155mm	22mm	1 ea	7110-8340S	140mm	Full	1 ea
7110-8660S	160mm	22mm	1 ea	7110-8345S	145mm	Full	1 ea
7110-8665S	165mm	22mm	1 ea	7110-8350S	150mm	Full	1 ea
7110-8670S	170mm	22mm	1 ea	7110-8355S	155mm	Full	1 ea
7110-8675S	175mm	22mm	1 ea	7110-8360S	160mm	Full	1 ea
7110-8680S	180mm	22mm	1 ea	7110-8365S	165mm	Full	1 ea
7110-8830S	130mm	46mm	1 ea	7110-8370S	170mm	Full	1 ea
7110-8835S	135mm	46mm	1 ea	7110-8375S	175mm	Full	1 ea
7110-8840S	140mm	46mm	1 ea	7110-8380S	180mm	Full	1 ea
7110-8845S	145mm	46mm	1 ea				
7110-8850S	150mm	46mm	1 ea				
7110-8855S	155mm	46mm	1 ea				
7110-8860S	160mm	46mm	1 ea				
7110-8865S	165mm	46mm	1 ea				

Cat. No.	Description	Set Qty
7117-7123	3.2mm x 358mm Threaded Guide Pin	3 ea

Catalog Information

8.0mm Cannulated Screw

Titanium Implant Set

Set No. 7181-2505

Cat. No.	Screw Length	Thread Length	Set Qty	Cat. No.	Screw Length	Thread Length	Set Qty
7110-9240S	40mm	Full	1 ea	7110-9590S	90mm	22mm	2 ea
7110-9245S	45mm	Full	1 ea	7110-9595S	95mm	22mm	2 ea
7110-9250S	50mm	Full	1 ea	7110-9600S	100mm	22mm	2 ea
7110-9255S	55mm	Full	1 ea	7110-9605S	105mm	22mm	2 ea
7110-9260S	60mm	Full	1 ea	7110-9610S	110mm	22mm	2 ea
7110-9265S	65mm	Full	1 ea	7110-9615S	115mm	22mm	2 ea
7110-9270S	70mm	Full	1 ea	7110-9620S	120mm	22mm	2 ea
7110-9275S	75mm	Full	1 ea	7110-9625S	125mm	22mm	2 ea
7110-9280S	80mm	Full	1 ea	7110-9755S	55mm	46mm	2 ea
7110-9285S	85mm	Full	1 ea	7110-9760S	60mm	46mm	2 ea
7110-9290S	90mm	Full	1 ea	7110-9765S	65mm	46mm	2 ea
7110-9295S	95mm	Full	1 ea	7110-9770S	70mm	46mm	2 ea
7110-9300S	100mm	Full	1 ea	7110-9775S	75mm	46mm	2 ea
7110-9305S	105mm	Full	1 ea	7110-9780S	80mm	46mm	2 ea
7110-9310S	110mm	Full	1 ea	7110-9785S	85mm	46mm	2 ea
7110-9315S	115mm	Full	1 ea	7110-9790S	90mm	46mm	2 ea
7110-9320S	120mm	Full	1 ea	7110-9795S	95mm	46mm	2 ea
7110-9325S	125mm	Full	1 ea	7110-9800S	100mm	46mm	2 ea
7110-9540S	40mm	22mm	2 ea	7110-9805S	105mm	46mm	2 ea
7110-9545S	45mm	22mm	2 ea	7110-9810S	110mm	46mm	2 ea
7110-9550S	50mm	22mm	2 ea	7110-9815S	115mm	46mm	2 ea
7110-9555S	55mm	22mm	2 ea	7110-9820S	120mm	46mm	2 ea
7110-9560S	60mm	22mm	2 ea	7110-9825S	125mm	46mm	2 ea
7110-9565S	65mm	22mm	2 ea				
7110-9570S	70mm	22mm	2 ea				
7110-9575S	75mm	22mm	2 ea				
7110-9580S	80mm	22mm	2 ea				
7110-9585S	85mm	22mm	2 ea				

Cat. No.	Description	Set Qty
7110-3000S	12.7mm O.D. Round Washer	3 ea
7110-3003S	Butterfly washer	3 ea

8.0mm Long Cannulated Screw

Titanium Implant Set

Set No. 7181-2608

Cat. No.	Screw Length	Thread Length	Set Qty	Cat. No.	Screw Length	Thread Length	Set Qty
7110-9330S	130mm	Full	1 ea	7110-9670S	170mm	22mm	1 ea
7110-9335S	135mm	Full	1 ea	7110-9675S	175mm	22mm	1 ea
7110-9340S	140mm	Full	1 ea	7110-9680S	180mm	22mm	1 ea
7110-9345S	145mm	Full	1 ea	7110-9830S	130mm	46mm	1 ea
7110-9350S	150mm	Full	1 ea	7110-9835S	135mm	46mm	1 ea
7110-9355S	155mm	Full	1 ea	7110-9840S	140mm	46mm	1 ea
7110-9360S	160mm	Full	1 ea	7110-9845S	145mm	46mm	1 ea
7110-9365S	165mm	Full	1 ea	7110-9850S	150mm	46mm	1 ea
7110-9370S	170mm	Full	1 ea	7110-9855S	155mm	46mm	1 ea
7110-9375S	175mm	Full	1 ea	7110-9860S	160mm	46mm	1 ea
7110-9380S	180mm	Full	1 ea	7110-9865S	165mm	46mm	1 ea
7110-9630S	130mm	22mm	1 ea	7110-9870S	170mm	46mm	1 ea
7110-9635S	135mm	22mm	1 ea	7110-9875S	175mm	46mm	1 ea
7110-9640S	140mm	22mm	1 ea	7110-9880S	180mm	46mm	1 ea
7110-9645S	145mm	22mm	1 ea				
7110-9650S	150mm	22mm	1 ea	Cat. No.	Description		Set Qty
7110-9655S	155mm	22mm	1 ea	7117-7123	3.2mm x 358mm Threaded Guide Pin		3 ea
7110-9660S	160mm	22mm	1 ea				
7110-9665S	165mm	22mm	1 ea				



We are proud to be a Diamond Level
Supporter of the Research and Education
of the Orthopaedic Trauma Association

**Orthopaedic Trauma &
Clinical Therapies**

Smith & Nephew, Inc.
1450 Brooks Road
Memphis, TN 38116
USA

www.smith-nephew.com

Telephone: 1-901-396-2121
Information: 1-800-821-5700
Orders/inquiries: 1-800-238-7538