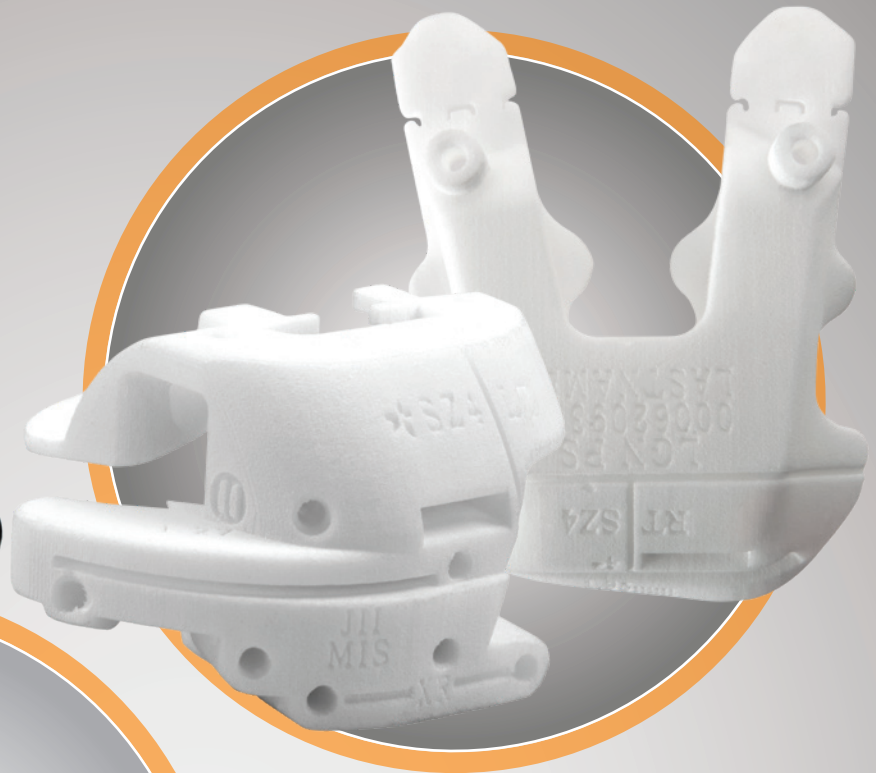




JOURNEY II XR
Bi-Cruciate Retaining
Knee System



VISIONAIRE
Adaptive Guides

Preoperative advantage

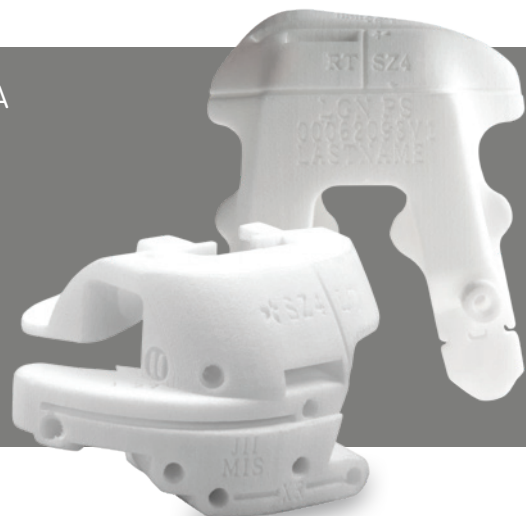
Designed to provide a preoperative advantage for accessing a patient's overall deformity and ACL sufficiency through advanced imaging (MRI and X-Ray) and a personalized engineer

 **smith&nephew**
VISIONAIRE[◊]
Adaptive Guides

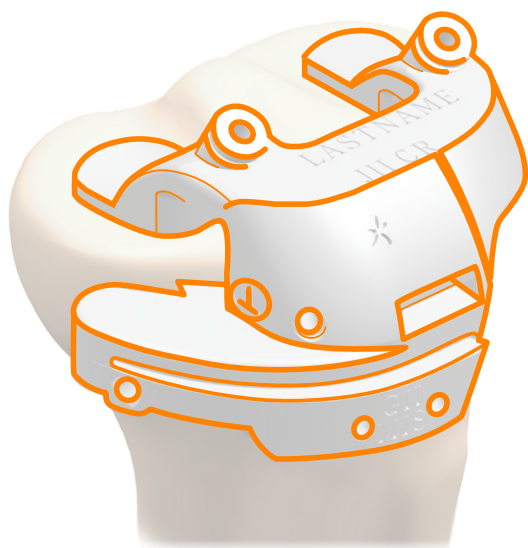
JOURNEY[◊] II XR[◊]
Bi-Cruciate Retaining Knee System

Supporting healthcare professionals

- Femoral Cutting Guides are the same ones used for JOURNEY II TKA
- Tibial Cutting Guides for JOURNEY[®] II XR[®] aid in proper pin position
- Sets alignment, sizing, cut depth and slope of the tibia
- Offers an early indication of the position and rotation of the baseplate as well as the proper location for the Eminence Chisel
- Cutting slot is built in to easily convert to JOURNEY II TKA
- Manufactured in Memphis, USA



JOURNEY II CR



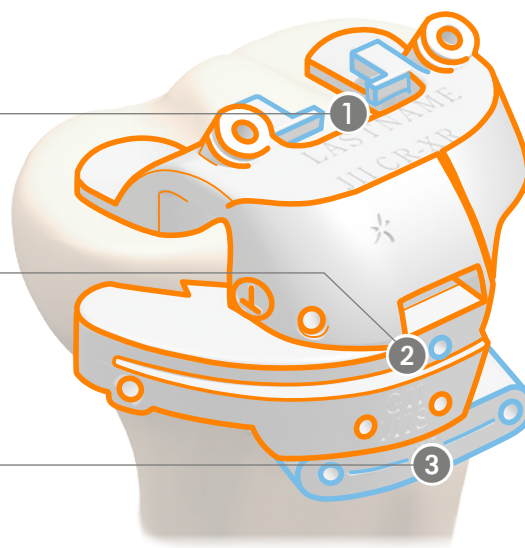
Added XR features

1 Eminence Chisel cut locator

2 Medial Orientation Stylus drill hole

3 XR Datum Block pin holes

JOURNEY II CR-XR



Contact your local Smith & Nephew Representative to get started today.

It is important to note, a surgeon must be certified in the JOURNEY II XR standard surgical procedure through Smith & Nephew Medical Education prior to scheduling a case. Please visit www.orthomeetings.com for training opportunities.

Smith & Nephew
1450 Brooks Road
Memphis, TN 38116
USA

www.smith-nephew.com
®Trademark of Smith & Nephew.
©2019 Smith & Nephew, Inc.
15899 V2 02/19

Supporting healthcare professionals for over 150 years