

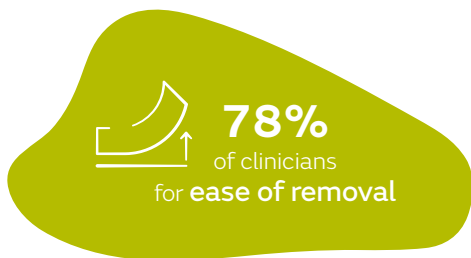
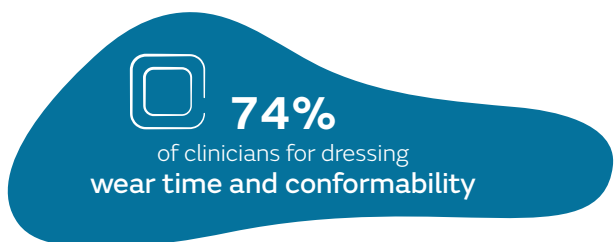
Performance of ALLEVYN[◇] GENTLE BORDER LITE Foam Dressing in a range of wound types across several clinical settings

Stephen-Haynes J, Greenwood M. Clinical evaluation of Allevyn Gentle Border Lite™ within one health trust. *Br J Nurs*. 2011;20(20):S36–S42.

Available at: [British Journal of Nursing](#)

Key points

ALLEVYN GENTLE BORDER LITE Dressing was rated as excellent or very good by:

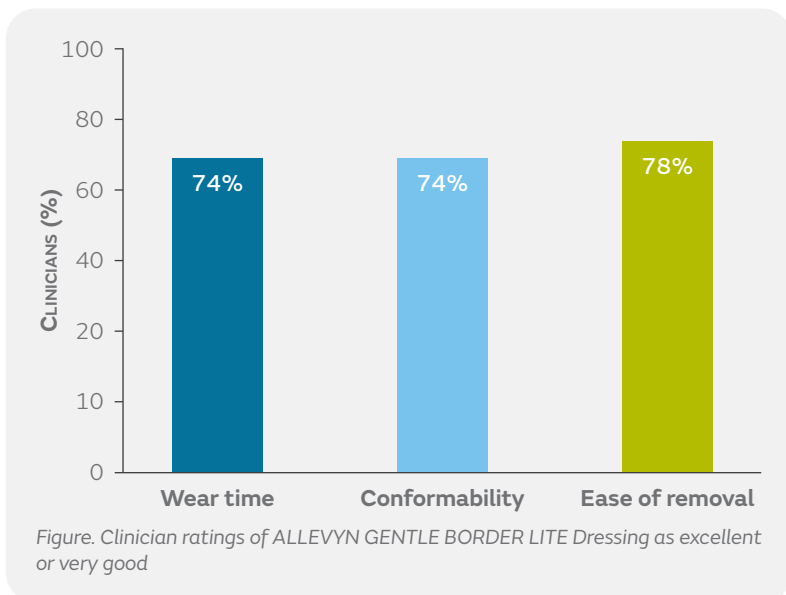


Overview

- Non-comparative clinical evaluation of ALLEVYN GENTLE BORDER LITE Dressing in one UK primary care organisation with 30 different care settings
- ALLEVYN GENTLE BORDER Dressing was evaluated for ease of application and removal, wear time, durability and patient comfort
- Clinicians were trained on use of ALLEVYN GENTLE BORDER LITE Dressing for both acute and chronic wounds before the study
- The most common wound types were superficial pressure ulcers (n=13, 20%), followed by skin tears (n=9, 18%) and minor trauma (n=7, 14%)
- Of the 50 patients recruited, 44% (n=22) had fragile skin at baseline

Results

- At the end of the study, ALLEVYN GENTLE BORDER LITE Dressing was rated by clinicians as excellent or very good for (Figure):
 - Wear time (37 of 50 clinicians, 74%)
 - Conformability (37 of 50 clinicians, 74%)
 - Ease of dressing removal (39 of 50 clinicians, 78%)



Conclusions

ALLEVYN GENTLE BORDER LITE Dressing allowed for a secure fit, could be applied to patients with fragile skin and could be used on difficult-to-dress areas.

For detailed product information, including indications for use, contraindications, precautions and warnings, please consult the product's applicable Instructions for Use (IFU) prior to use.